

Authorisation «Municipality of Viterbo (Viterbo)»

Main KPIs and information (1/3)



Type of system (by-products / MSW)	Biomethan production from by-products	Surface Rights / Land Properties	<ul style="list-style-type: none"> Purchase of the Land for € 600k
Location site	<ul style="list-style-type: none"> Municipality of Viterbo (Viterbo) 42°27'55.8"N 12°02'08.1"E 	Type of connection / distribution	<ul style="list-style-type: none"> Connection system to the SNAM Network– 2.000m Expected LBM (Liquid Natural Gas) Distribution
Site Area (m²)	113.120	Required Technologies	<ul style="list-style-type: none"> Schmack digestive 2LNG upgrading technology/GNL Biogest Service compost technology
Type of Land	Agricultural	Providers expected/ Pre-Contracts	<ul style="list-style-type: none"> Geo Studio Engineering has already signed no-binding agreements with the main biomass suppliers
Company (NewCo)	Castelleone Biometano S.r.l.	Compost withdrawal contracts	<ul style="list-style-type: none"> Consorzio Biofuel Net
Power (Nm³/h)	500	Balance of the biomass	<ul style="list-style-type: none"> PARTE A dell'Allegato 3 del Decreto 10/10/2014 e s.m.i.: a), e), f), g), h), i), l), m), n), o), p), q), r)
State of progress of the authorisation process	Autorisation expected for April 2023		

Authorisation «Municipality of Viterbo (Viterbo)»
Main KPIs and information (2/2)



Layout

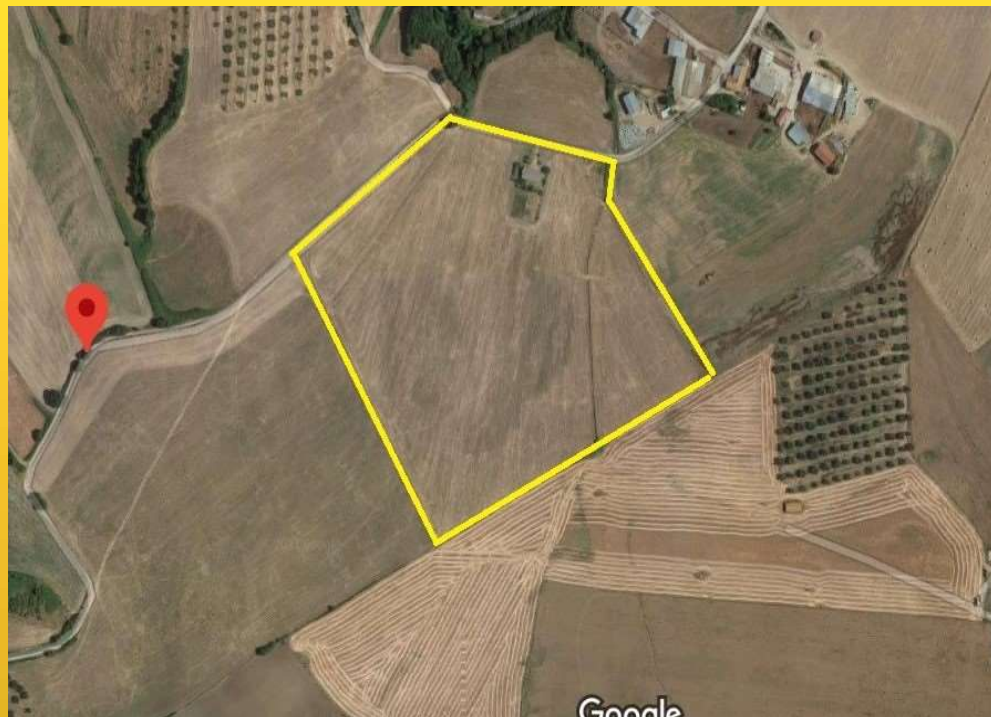


GREEN RENEWABLE ENERGIES

Authorisation «Municipality of Viterbo (Viterbo)»
Main KPIs and information (2/2)



Geographic framework Google Maps



GREEN RENEVABLE ENERGIES